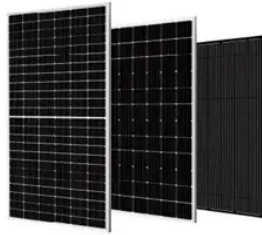




The current of photovoltaic combiner box is the same



Overview

The current stays the same as one panel. If you connect panels in parallel, you keep the voltage the same, but the current adds up. A solar combiner box is a crucial component in solar energy systems, designed to consolidate the outputs of multiple solar panel strings into a single output that connects to an inverter. It makes wiring easier and. The best practice is to use 2 separate charge controllers and not combine the 2 strings. Thanks for the reply Bobert, do you suggest that the diagram in the second picture would be ok to connect to 1 mppt?

When connecting panels of different volts/amps, one or the other will be reduced. 6 billion by 2033, underscoring its critical role in modern solar infrastructure. This demand is particularly strong in China, a global solar leader. With over 200 GW of installed solar capacity and a target of 1,200 GW by.



Article Content

What Is a Combiner Box in a Solar Panel System?

A good combiner box combines current, stops over-current, absorbs surges, and reports live data. These four parts raise safety, speed up service, and protect ...

Understanding PV Combiner Boxes: Design, Function, Protection, and ...

A complete guide to PV combiner boxes, covering structure, safety protection, monitoring, IP ratings, selection principles, and future smart trends. Learn how advanced combiner ...

Photovoltaic DC Combiner Box vs. AC Combiner Box: What's the ...

This article provides a detailed introduction to the differences between photovoltaic AC combiner boxes and DC combiner boxes, explaining their similarities and differences in terms of ...

What is a Combiner Box as Used in PV System: A ...

There are different combiner boxes for different solar setups and needs. The combiner box is very important in a photovoltaic system. You ...

Solar Combiner Boxes and Voltage Changes: What to Know

If you connect panels in parallel, you keep the voltage the same, but the current adds up. This setup helps you manage the output of multiple strings in your system.

Photovoltaic AC combiner box detailed explanation

For a huge photovoltaic power station, the amount of the combiner box only accounts for 1%, but 100% of the current passes through it. During ...

Combiner Box Output Voltage/Current help

- A string of panels that have the same amperage is good, and the voltages will add together. If the amperages are not the same, all panels will be reduced to the amperage output of the ...

A Comprehensive Guide to Combiner Boxes in ...

Combiner boxes play an important role in photovoltaic (PV) installations. This comprehensive guide aims to shed light on the importance, functions, types and ...

Boost Solar ROI: The 2025 Combiner Box Guide

Imagine each solar panel string as a small stream carrying an electrical current. The combiner box is the confluence where these streams ...

Contact Us

For more information, pricing, or custom solutions, please contact us:

Website: <https://www.proton-engineering.eu>

Email: info@proton-engineering.eu

Phone: +1 832 471 8952

Address: 12345 Lake City Way, Suite 200, Houston, TX 77001, USA

This document is for informational purposes only. Specifications subject to change without notice.

